



Software for **PRIVATE BAILIFFS**



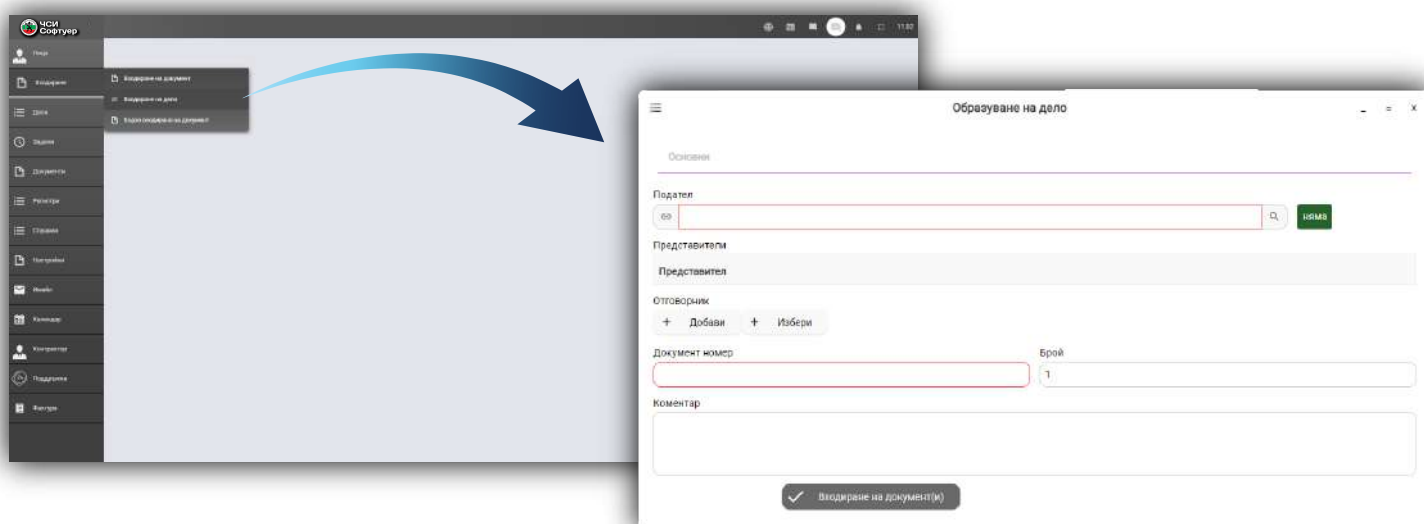
The developed software platform covers all processes and activities in the work of the office of the Private Bailiff (PSB).

The innovative feature of the system is the ability to make analytical inquiries based on the collected data by address, receivables, gender, age, through which the Client can plan his activities, plan his expenses, as well as receive predictive results with a high degree of credibility.



Main functionalities in the system

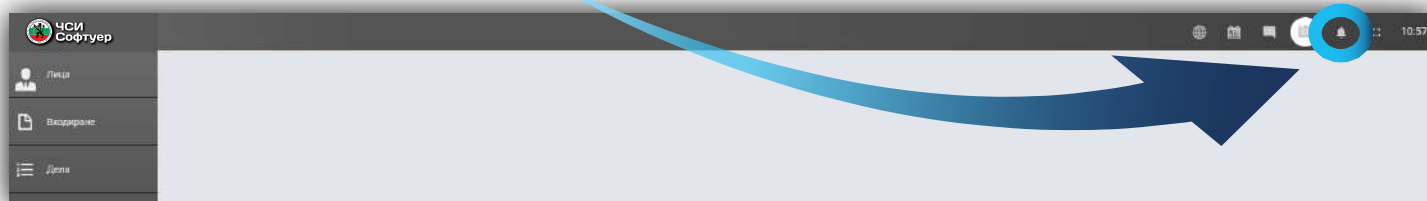
- ✓ Fast entry of documents and creation of cases, including mass creation.



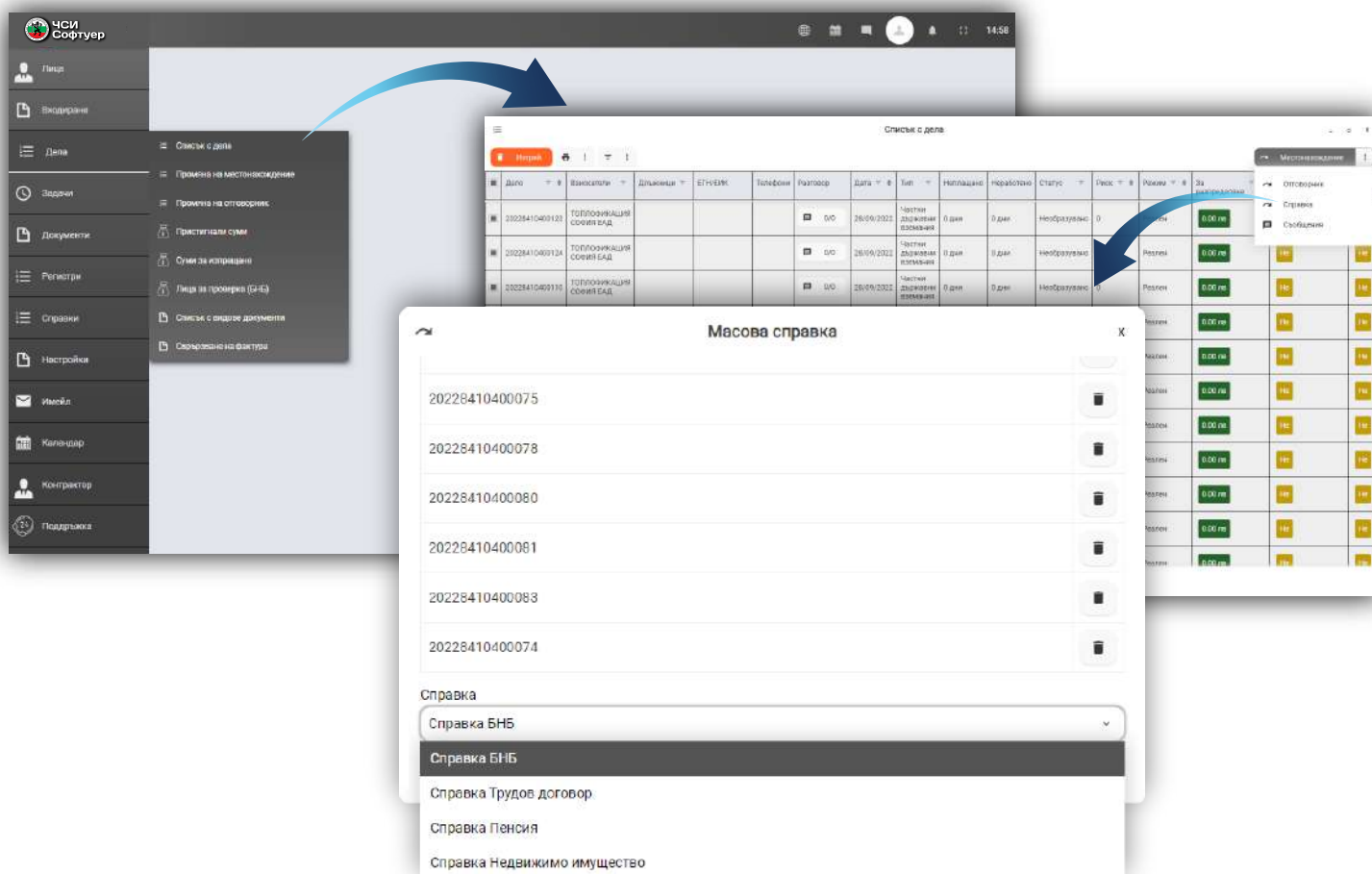
- ✓ A personal file of claimants, debtors and other persons involved in the cases is maintained.



- ✓ The processes are managed through the organized tasks to the employees of the office, and every single action is tracked and documented. Quick financial statements help with timely notification, collection of debts and distribution of collected sums.
- ✓ Notifications in the system remind about the specific urgent actions and processes.

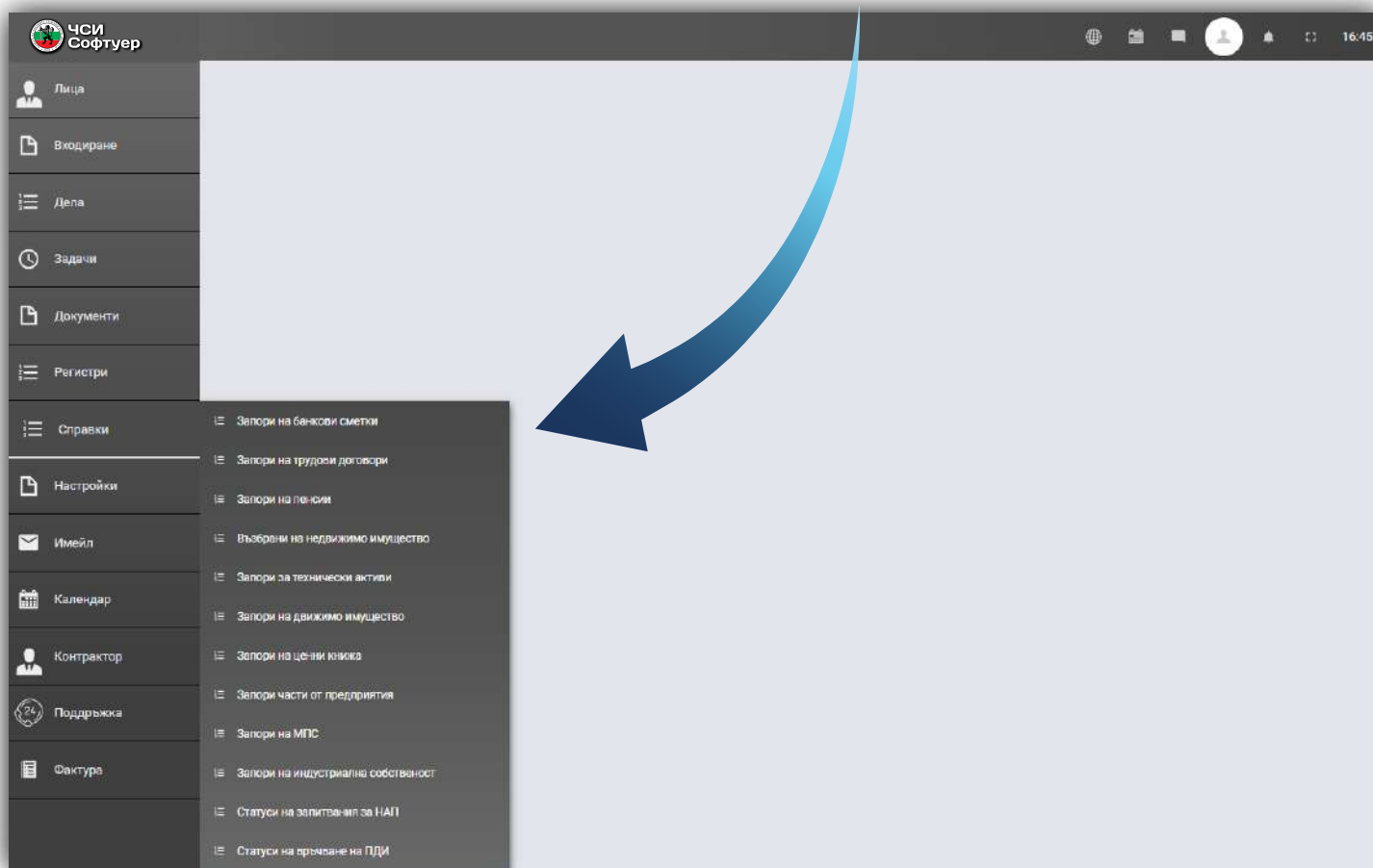


- ✓ The system automatically fills in all necessary registers under the law on private bailiffs.
- ✓ One of the most innovative functionalities of the system is the release and processing of mass inquiries for multiple persons on multiple cases. The system is integrated with all government institutions that allow real-time data exchange and inquiries are processed in seconds.





- ✓ Another function is mass assignments, including the person in charge and the location of the case in the different departments in the office.
- ✓ Debtors and clients of the Office have access to reports that track in real time the movement of documents, the amounts collected, the collection forecast and success rate. These reports can be accessed through the client's remote access service account, exported to popular formats and integration between the PSI system and the client's Software can be arranged for continuous data and information exchange.

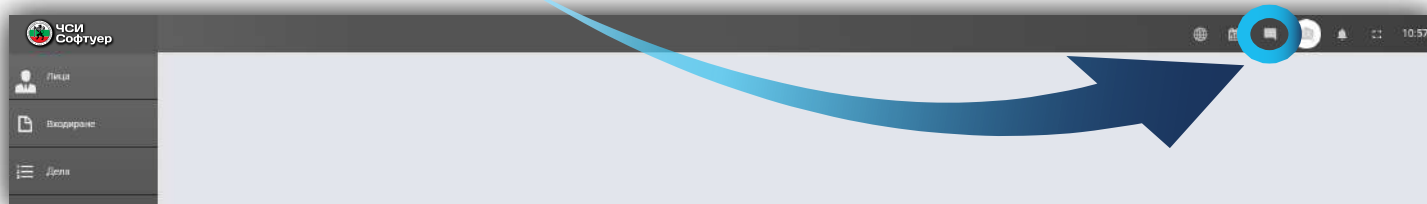


- ✓ The system stores scanned copies of the Office's document collection. Provides an electronic case file.
- ✓ Calendar and organizer of events and tasks.

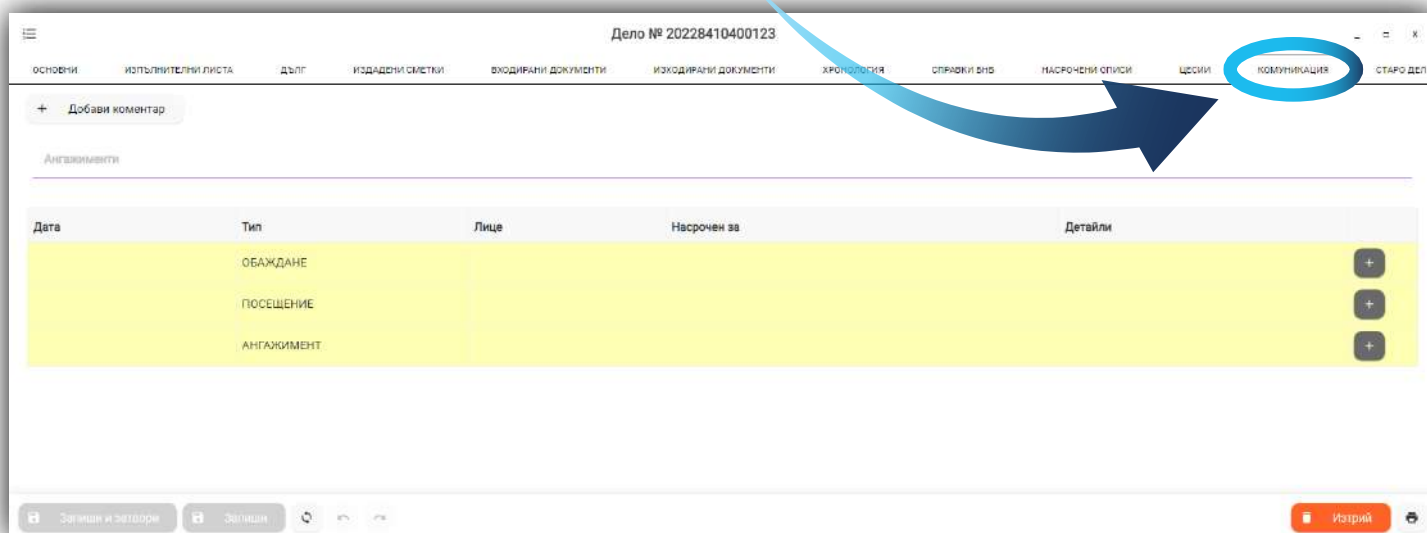




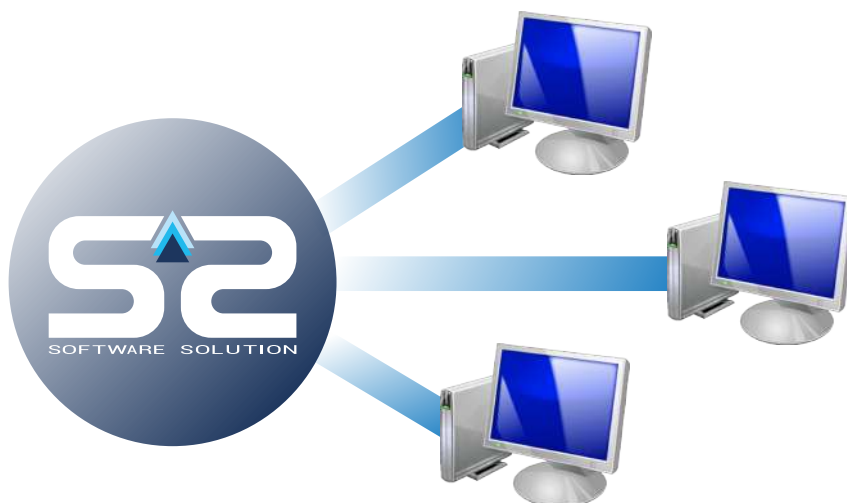
- ✓ Own internal chat, including voice and video calls, file sharing and text messaging.



- ✓ The system has the ability to fully track the correspondence with the debtors, such as not only document turnover, but also calls, visits, commitments and others.



- ✓ The system is integrated with the leading courier companies, allowing the exchange of information on shipments in real time.
- ✓ Integration with leading banks, automating incoming and outgoing payments.



Automated document flow processes

The system allows **full automation of processes without human intervention** - from submitting a request for a specific action, checking property, case status, document status, to generating the corresponding action document

It has "intelligent profiling of the cases" grouped by the origin of the claim, size, gender, age, etc., and the selection on this basis of the most suitable, such as price and effective method.

